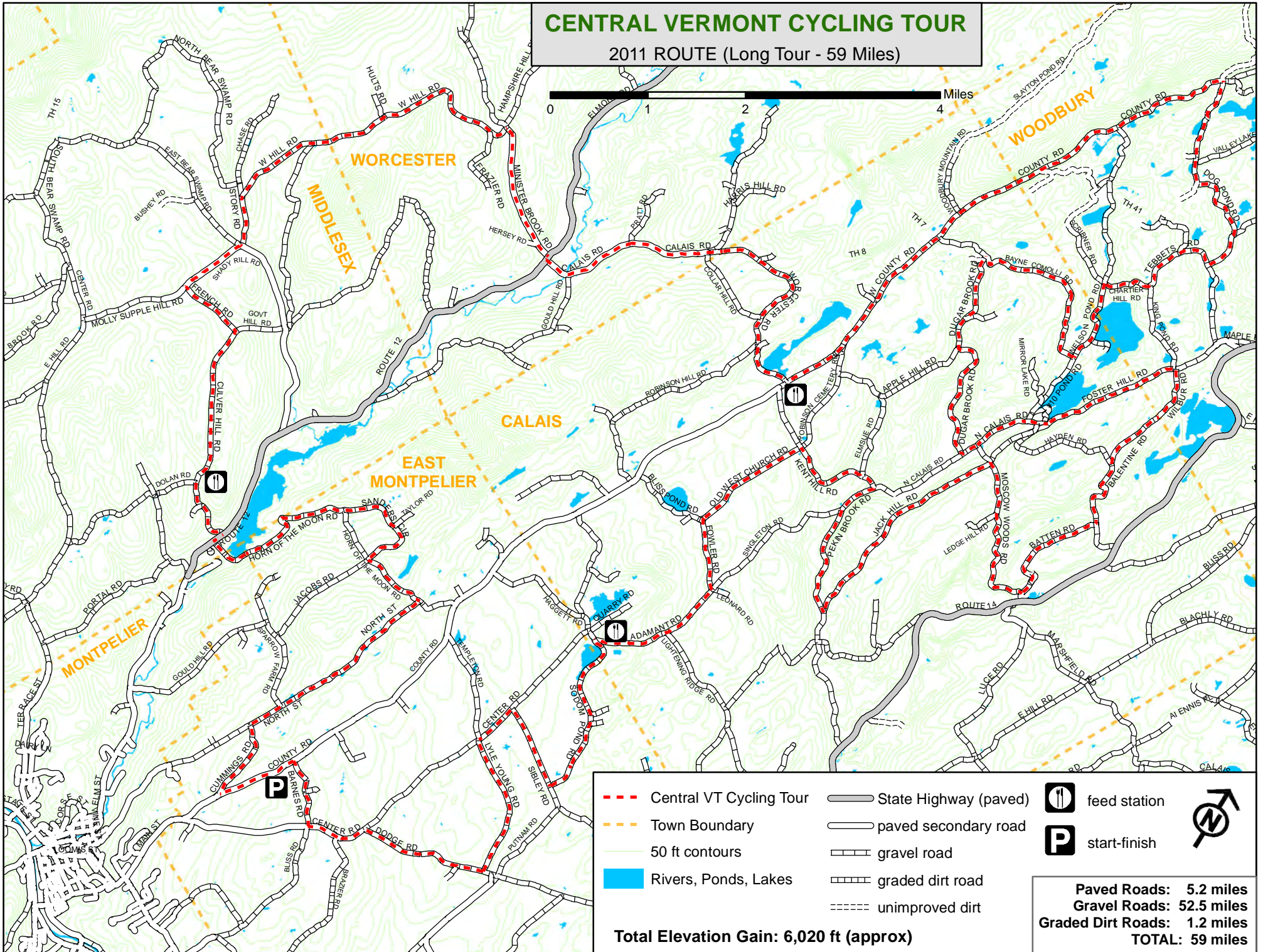


CENTRAL VERMONT CYCLING TOUR

2011 ROUTE (Long Tour - 59 Miles)



	Central VT Cycling Tour		State Highway (paved)		feed station	
	Town Boundary		paved secondary road		start-finish	
	50 ft contours		gravel road			
	Rivers, Ponds, Lakes		graded dirt road			
			unimproved dirt			

Paved Roads: 5.2 miles
Gravel Roads: 52.5 miles
Graded Dirt Roads: 1.2 miles
TOTAL: 59 miles

Total Elevation Gain: 6,020 ft (approx)